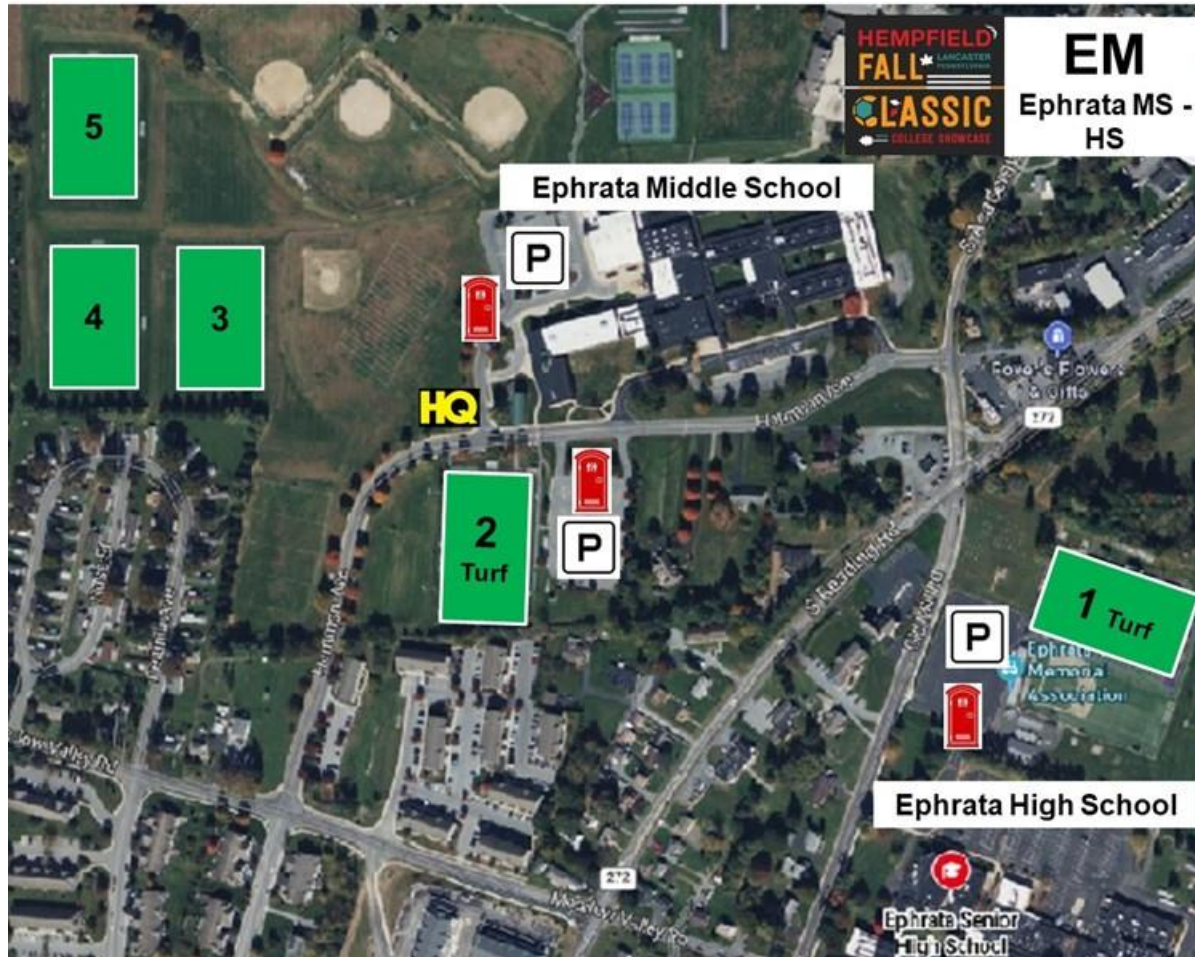


2024 Hempfield Fall Classic



BE AWARE agricultural pesticides are periodically used on fields

Ephrata MS & HS

Field 1

803 Oak Blvd
Ephrata, PA 17552

Fields 2, 3, 4, 5

957 Hammon Ave
Ephrata, PA 17552

Parking:

- Park in lot not on grass or along lane marked with no parking.

Rules:

- No pets
- No smoking
- No alcohol
- Respect private property
- Lock vehicle and take valuables

Field:

- Fields 1 & 2 are Turf
- Fields 3, 4, 5 = 11v11 grass

Portable restroom units at venue